



# MONTHLY MEMBERSHIP PROGRESS REPORT

District 321A2

Results as of: 06/30/2018

GMT: ANIL TULSYAN

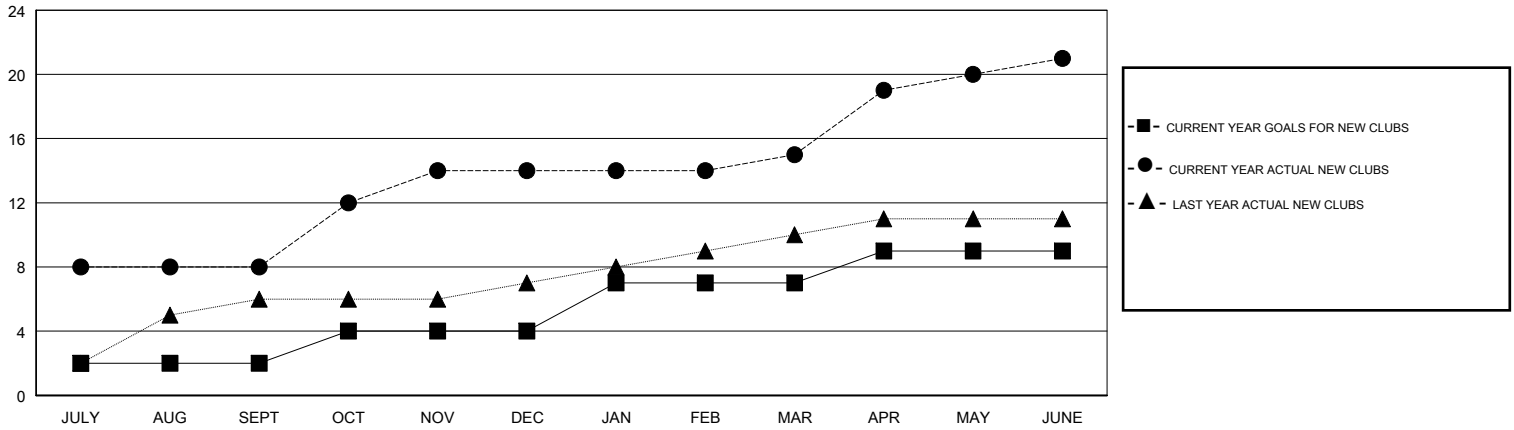
LOCATION INDIA

GMT CA

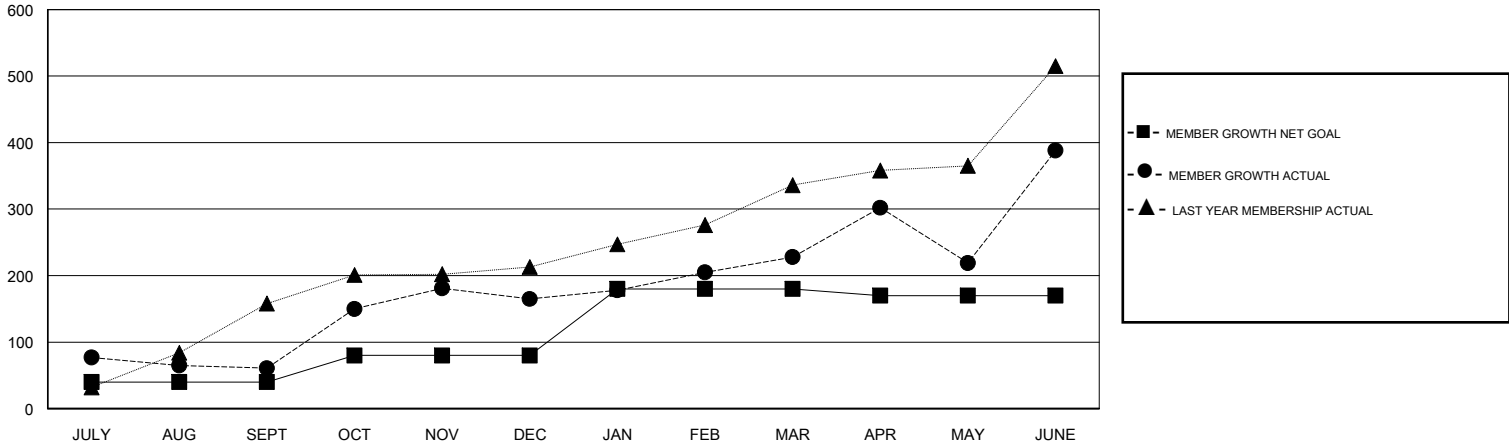
Clubs			
RESULTS FOR 2017-2018			
QUARTER	NEW CLUB GOAL	NEW CLUBS	DROPPED CLUBS
JULY/AUG/SEPT	2	8	0
OCT/NOV/DEC	2	6	1
JAN/FEB/MAR	3	1	0
APR/MAY/JUNE	2	6	0

Members			
RESULTS FOR 2017-2018			
QUARTER	MEMBER GROWTH NET GOAL	MEMBER GROWTH ACTUAL	DROPPED MEMBERS ACTUAL (including transfers)
JULY/AUG/SEPT	40	266	191
OCT/NOV/DEC	40	218	102
JAN/FEB/MAR	100	156	76
APR/MAY/JUNE	-10	751	557

GOALS AND ACTUAL NEW CLUBS CUMULATIVE



GOALS AND ACTUAL MEMBERS CUMULATIVE



DROPPED CLUBS: 1	103 CLUBS OF 122 ADDED 1 OR MORE NEW MEMBERS	<u>GENDER DISTRIBUTION</u>	
DROPPED MEMBERS		MALE	2,555 (67.68%)
DECEASED	10	FEMALE	1,220 (32.32%)
CLUB CANCELLED	0	Women Percentage Fiscal Year Goal: 35%	
OTHER	916	TOTAL FAMILY UNIT MEMBERS	0
TOTAL	926	FAMILY MEMBERS PAYING HALF DUES	0

[CLICK HERE FOR CUMULATIVE MEMBERSHIP DATA](#)